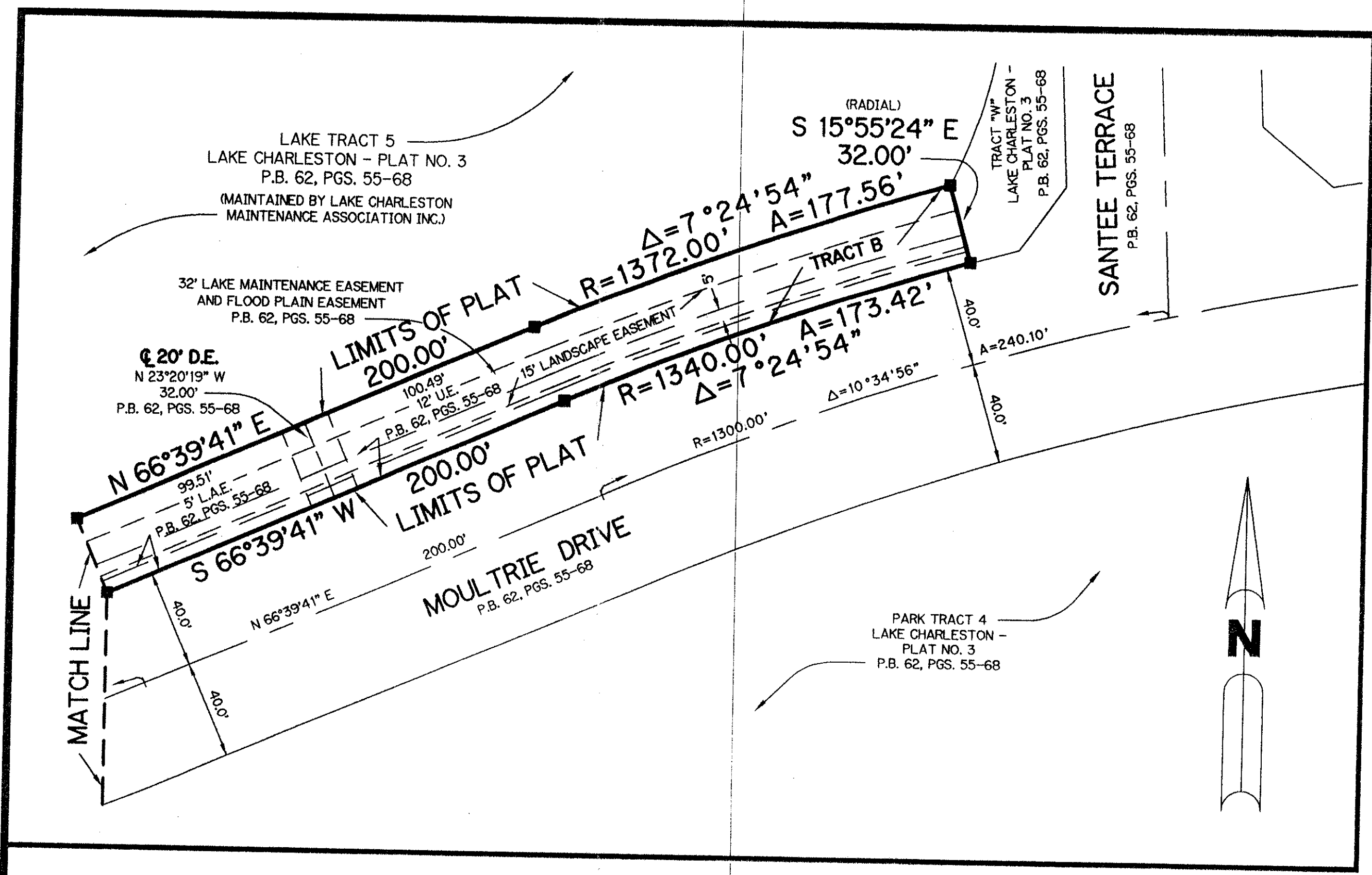


LAKE CHARLESTON - TRACT "Y"

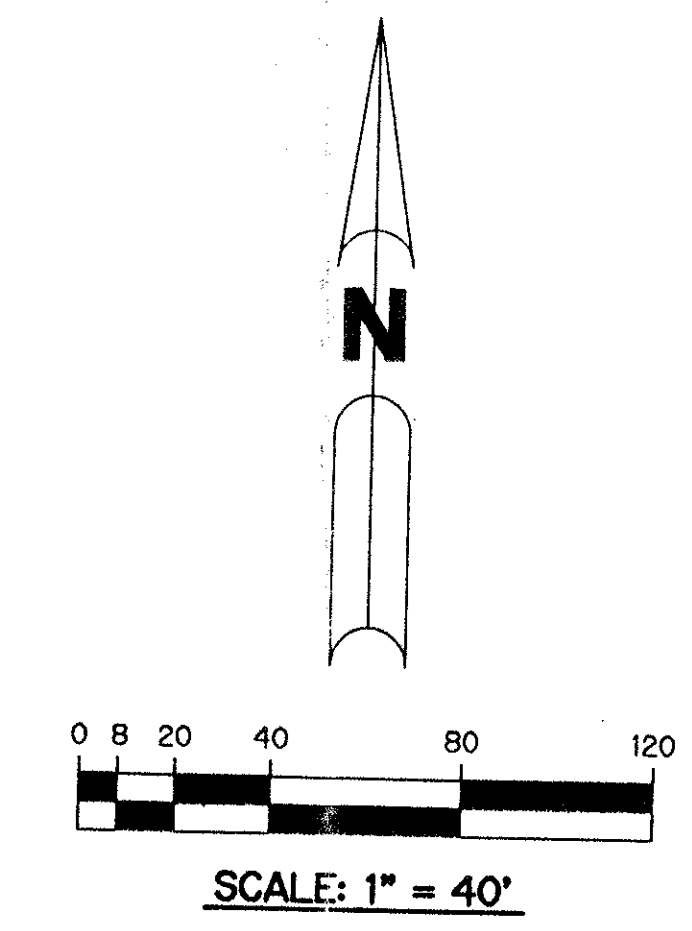
A PART OF LAKE CHARLESTON PLANNED UNIT DEVELOPMENT
BEING A REPLAT OF ALL OF TRACT "Y" ACCORDING TO THE PLAT OF LAKE CHARLESTON PLAT NO. 3 - P.U.D. AS RECORDED IN PLAT BOOK 62, PAGES 55 THROUGH 68 INCLUSIVE, OF THE PUBLIC RECORDS OF PALM BEACH COUNTY, FLORIDA. SECTION 9, TOWNSHIP 45 SOUTH, RANGE 42 EAST

SHEET 2 OF 2

JUNE, 1992



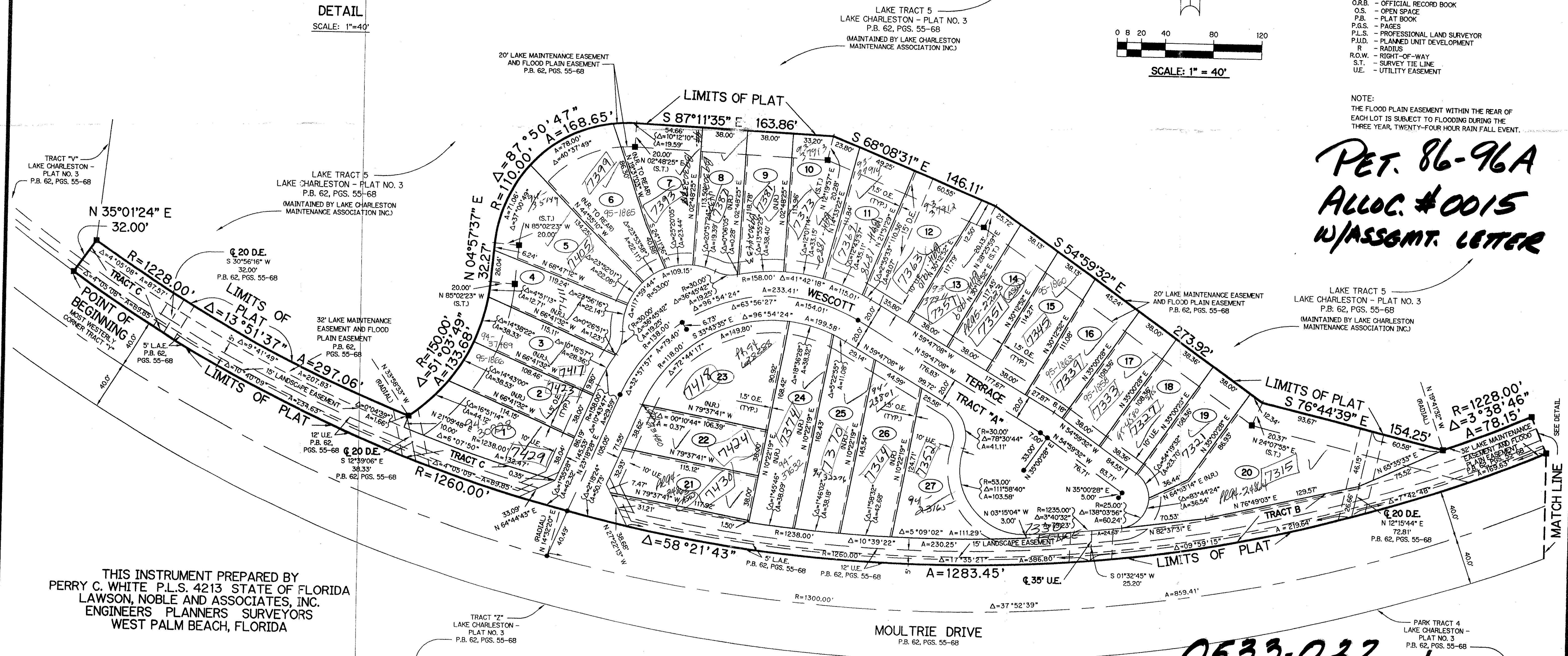
DETAIL
SCALE: 1"=40'



- LEGEND:**
- - PERMANENT REFERENCE MONUMENT, PLS #4213
 - - PERMANENT CONTROL POINT, PLS #4213
 - Δ - DELTA ANGLE
 - DE - DRAINAGE EASEMENT
 - FE - FLOOD PLAIN EASEMENT
 - LAE - LIMITED ACCESS EASEMENT
 - LME - LAKE MAINTENANCE EASEMENT
 - N.R. - NOT RADIAL
 - O.R. - OFFICIAL RECORD
 - O.R.B. - OFFICIAL RECORD BOOK
 - O.S. - OPEN SPACE
 - P.B. - PLAT BOOK
 - P.G.S. - PAGES
 - P.L.S. - PROFESSIONAL LAND SURVEYOR
 - P.U.D. - PLANNED UNIT DEVELOPMENT
 - R - RADIUS
 - R.O.W. - RIGHT-OF-WAY
 - S.T. - SURVEY TIE LINE
 - U.E. - UTILITY EASEMENT

NOTE:
THE FLOOD PLAIN EASEMENT WITHIN THE REAR OF EACH LOT IS SUBJECT TO FLOODING DURING THE THREE YEAR, TWENTY-FOUR HOUR RAIN FALL EVENT.

*PET. 86-96A
ALLOC. #0015
W/ASSGMT. LETTER*



THIS INSTRUMENT PREPARED BY
PERRY C. WHITE P.L.S. 4213 STATE OF FLORIDA
LAWSON, NOBLE AND ASSOCIATES, INC.
ENGINEERS PLANNERS SURVEYORS
WEST PALM BEACH, FLORIDA

SUBDIVISION * TRACT Y
BOOK 11 PAGE 146
FLOOD MAP # 185A
ZONING RTS
QUAD # 49
SE 86-96
PUD NAME LAKE CHARLESTON

TAZ 439

MOULTRIE DRIVE
P.B. 62, PGS. 55-68

0533-022

LAKE CHARLESTON-TRACT "Y" 7/1/47